



PEGGY CYPHERS

MODERN FOSSILS





PEGGY CYPHERS

MODERN FOSSILS

Cross Contemporary Art
99 Partition Street Saugerties, New York 12477

Published on the occasion of an exhibition November 4-27, 2017
Gallery Director, Jen Dragon

Modern Fossils

"Modern Fossils" are paintings that explore consciousness, evolution, geological time and the Anthropocene. The abstracted painted imagery takes on a plant/animal symbiosis and relies on a combination of gesture and layering of paint, texture and printed forms. The paintings fossilize the moment, meanwhile appropriating and reinventing images directly from nature and cultural history. The trace of the hand or mark making with brush leaves evidence of everything it is not, as visible impression of the indeterminacy of space and thought impression.

My painting is a synthesis of painting languages, connecting Modernism, Surrealism and fossil formations in natural history. It is an explorative process, with time as the main ingredient, some paintings taking many years. This technique allows me complete freedom to invent surfaces of paint, glazes, textures and patterns that radiate energy and light from within the physical structure of the painting.

The spectacle of opposition in the natural world - creation and destruction, growth and decay, rebirth and transformation, is the beauty that inspires and informs the work. The textural qualities of paint and sand embed gesture as Modern Fossils. Like a fossil of a geological trace, the paintings speak the infinite languages within water, sky and all of the natural environment. Modern Fossils unite the chaos and order of the natural world in a Darwinian evolutionary dance.

Fossil history has always fascinated me, and after moving to New York City in 1977, I continued to visit fossil sites in Maryland on the Chesapeake Bay to unravel the expressions of the earth embedded in the 20 million year old fossil deposits of the cliffs. My art evidences geological time as textural elements: crusty sand, clay cliffs and the aquatic movements of the bay and its bioluminescent properties.

Peggy Cyphers
New York City 2017



Garden Vortex 2017
acrylic, sand, leafing, silkscreen on canvas 25x24"



Flowering Weed 2016
acrylic, sand, collage on canvas 30x26"



Golden Hive 2017
acrylic, sand, gold and copper leaf on canvas 28x24"

Night Garden 2017
acrylic, silkscreen, sand, and leafing on canvas 70x50"



Blue Bird 2017
acrylic, cyanotype, copper leaf on canvas 10x10"



***Raspberry Patch* 2017**
acrylic, sand on canvas (detail) 30x26"



***Natural History* 2017**
acrylic, sand and silkscreen on canvas 24x24"

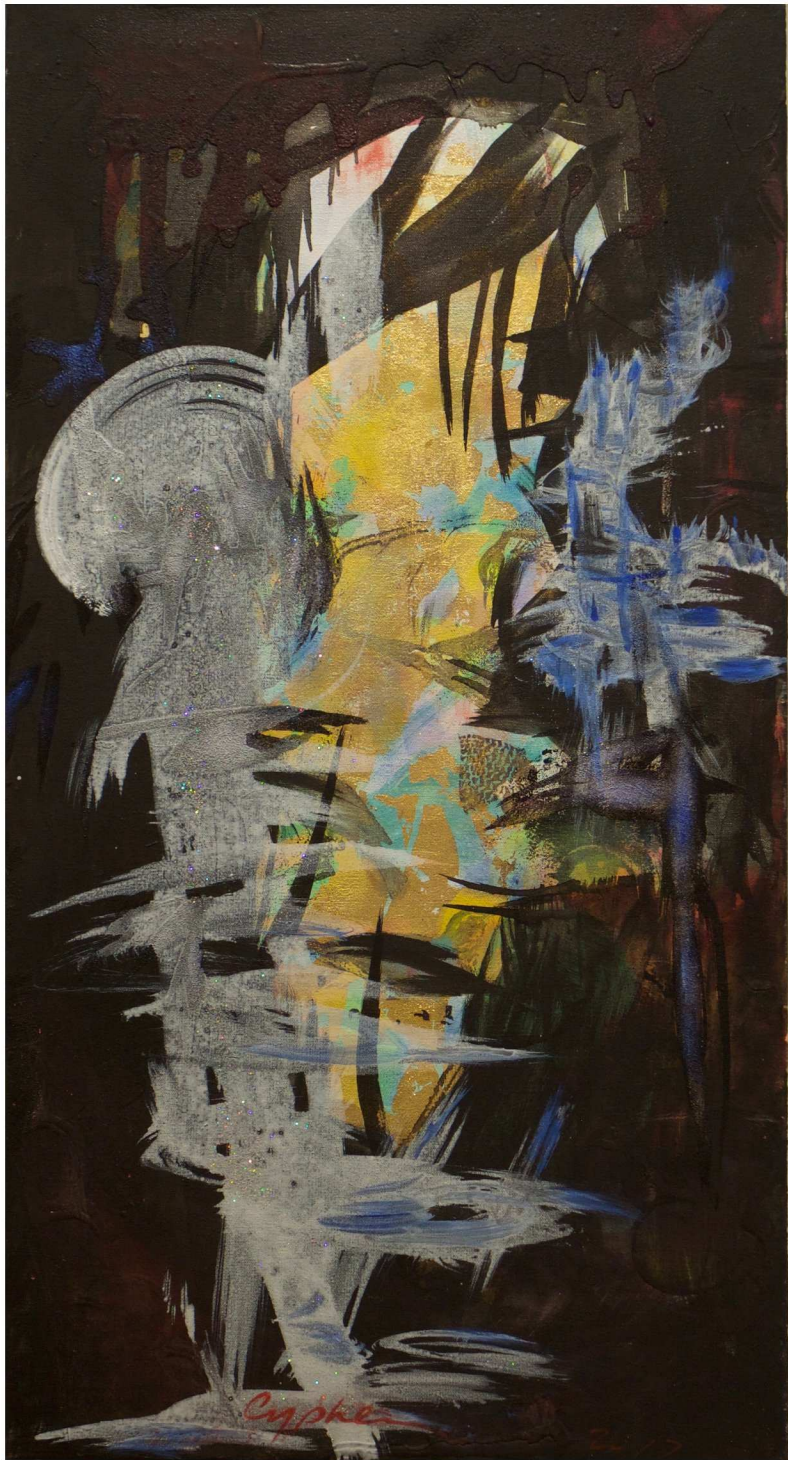




Night Garden 2017
acrylic, silkscreen, sand, and leafing on canvas 70x50"



Raspberry Patch 2017
acrylic, sand on canvas 30x26"



Tree House 2017
acrylic, silkscreen, sand, and leafing on canvas 30x15"



Bud Fossil 2017
acrylic, silkscreen, sand, and leafing on canvas 30x26"

Red Rose 2017
acrylic, sand on canvas 100x70"



Cherry Tree 2017
acrylic, sand on canvas 30x26"



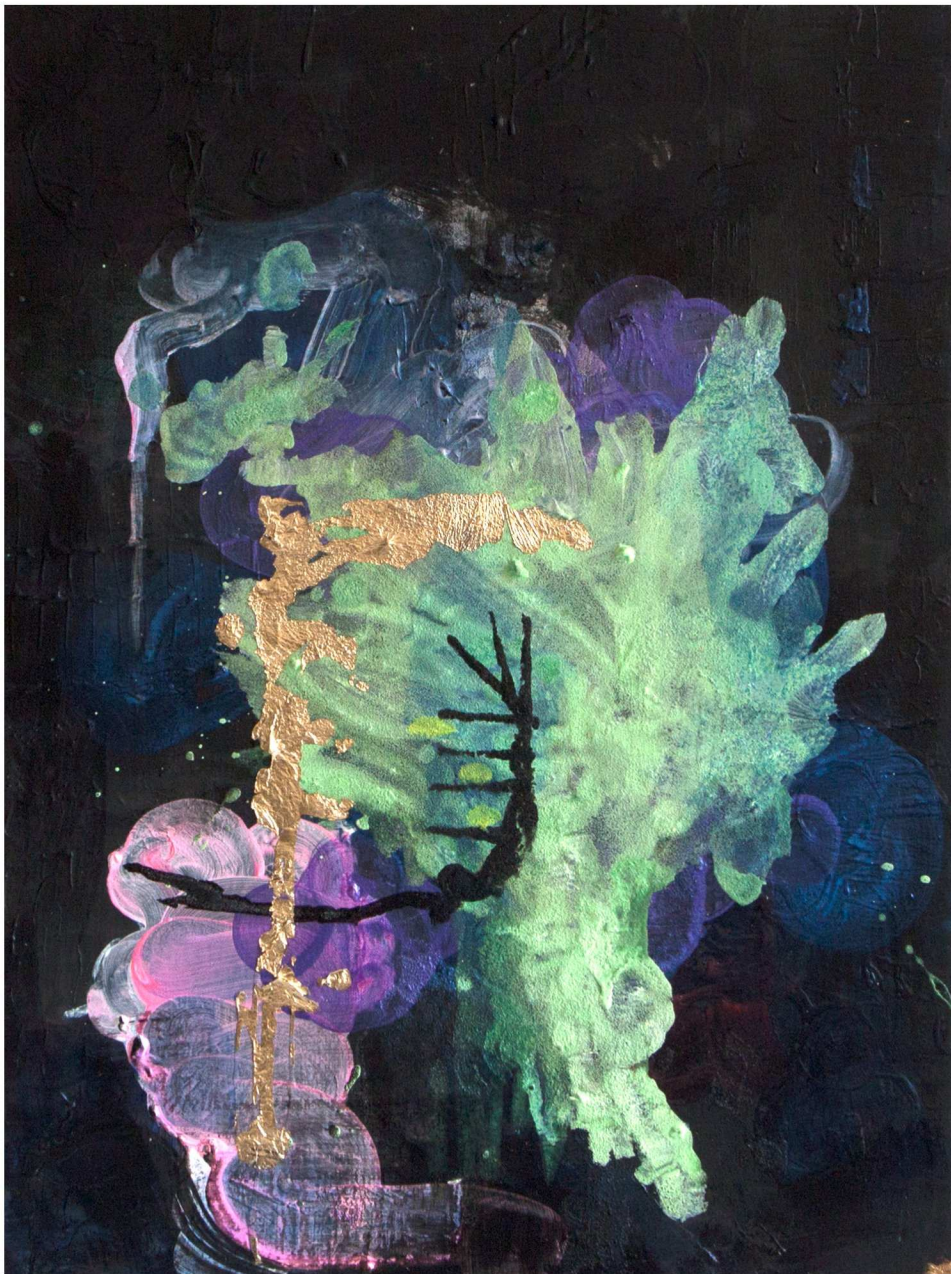


Gold Stalk 2017
acrylic, cyanotype, leafing on canvas 16x14"

The art of Peggy Cyphers responds to the multi-dimensional experience of the landscape from the various viewpoints of living beings. Gazing skyward from the bottom of a cavern like a fox or towards the horizon in a ruffle of woodpecker feathers, Ms. Cyphers re-imagines the world through different animal and plant consciousnesses, defying both perspective and gravity.

In the Brooklyn Rail, Jonathan Goodman writes about Ms. Cyphers: "Cyphers makes it clear that she has opted for a double awareness, in which non-objective insight vies with close scrutiny of the natural world." New York Times' Roberta Smith notes that Cyphers paints "in an effortless style that corrupts and complicates the staining technique originated by Color Field painters like Helen Frankenthaler with various ideas in the air: notational, pattern-prone motifs, landscape references and allusions to textiles and fabric."

Jen Dragon
Gallery Director, Cross Contemporary Art



Bioluminescent Being 2017
acrylic, ink, and sand on canvas 24x20"



Blue Birds 2017
acrylic, sand, silkscreen, leafing on canvas 46x34"



Blue World 2017
acrylic, sand, leafing on canvas 70x50"



Cardinal Mind 2017
acrylic, sand on canvas 30x26"



Red Buds 2015-17
acrylic, sand, on canvas 12x12"



Mind Fossil 2017
acrylic, sand, silkscreen, on canvas 44x38"



Golden Rod 2017
acrylic, ink, and sand on canvas 24x20"



Memorial to 8 Children of 9/11 2001-2017
acrylic, silkscreen and sand on canvas 100x70"



Sky Blue 2007-17
acrylic, cyanotype, sand on canvas 70x50"



Modern Fossils exhibition view
Cross Contemporary Art 2017



Red Labyrinth 2017
acrylic, pencil, leafing on canvas 16x14"



Goldfinch Fossil 2017
acrylic, sand, leafing on canvas 30x26"



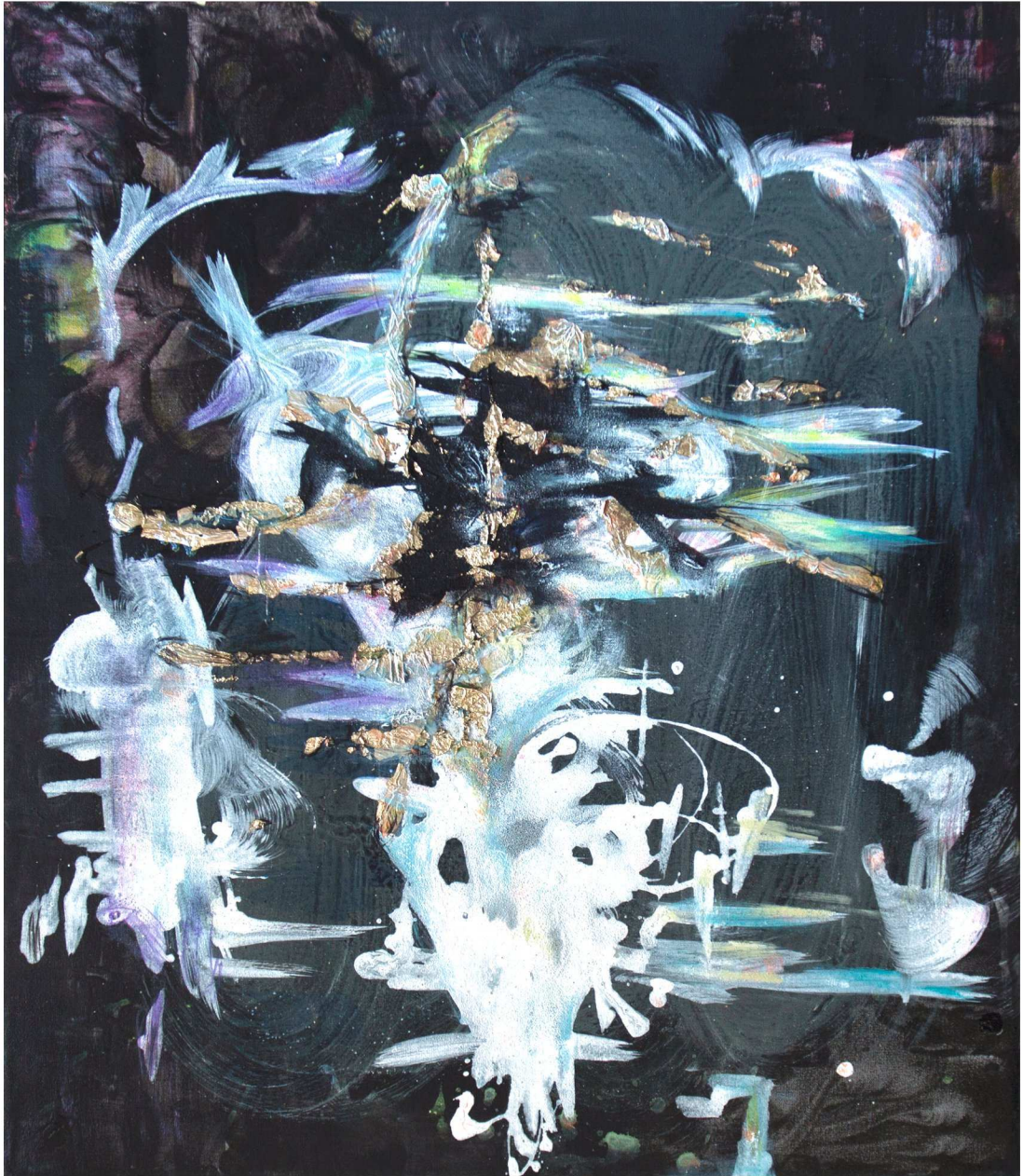
Labyrinth 2016
acrylic, silkscreen on canvas 50x40"



Night Weed 2017
acrylic, sand, leafing on canvas 42x22"



Jupiter 2003
acrylic, sand on linen 12x12"



***Hummingbird Fossil* 2017**
acrylic, sand, leafing on canvas 30x26"



Weed Shower 2017
acrylic, sand, leafing on canvas 26x30"



CROSS
CONTEMPORARY
ART



***Sun Weed* 2017**
acrylic, sand, leafing on canvas 20x20"



***Flame Fossil* 2017**
acrylic, sand, leafing, silkscreen on canvas 26x20"



***Plant Lumen* 2017**
acrylic, sand on canvas 30x24"



***Golden Bird* 2017**
acrylic, sand, gold and copper leaf on canvas 10x10"



Modern Fossils exhibition
Cross Contemporary Art 2017



Labyrinth, Gold, Silver 2017
acrylic, sand, leafing on canvas 56x49"



Modern Fossils exhibition
Cross Contemporary Art 2017



Love's Garden 2017
acrylic, sand, leafing on canvas 48x48"





Two Aunts 2011
acrylic and sand on linen 16x14"



Golden Fossil 2015
acrylic, sand, silkscreen, leafing on canvas 46x34"



Stairs Sept 12, 2001
acrylic, ink on canvas 24x18"

Bud Fossil 2017
acrylic, sand, leafing on canvas 24x20"

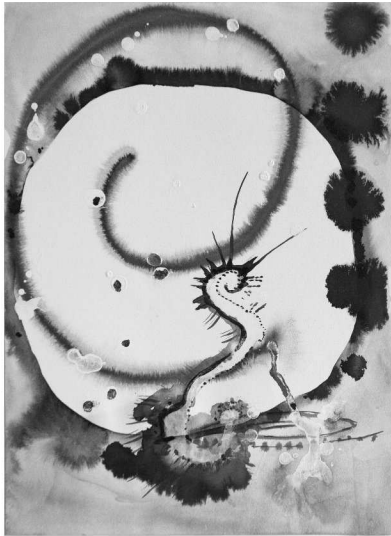


Cherry Blossom 2017
acrylic, sand, silkscreen, leafing on canvas 44x36"

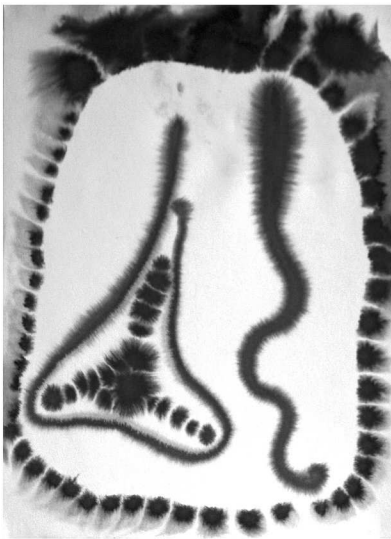




Sand Fossil 2009
ink, silkscreen and sand on paper 30x22"



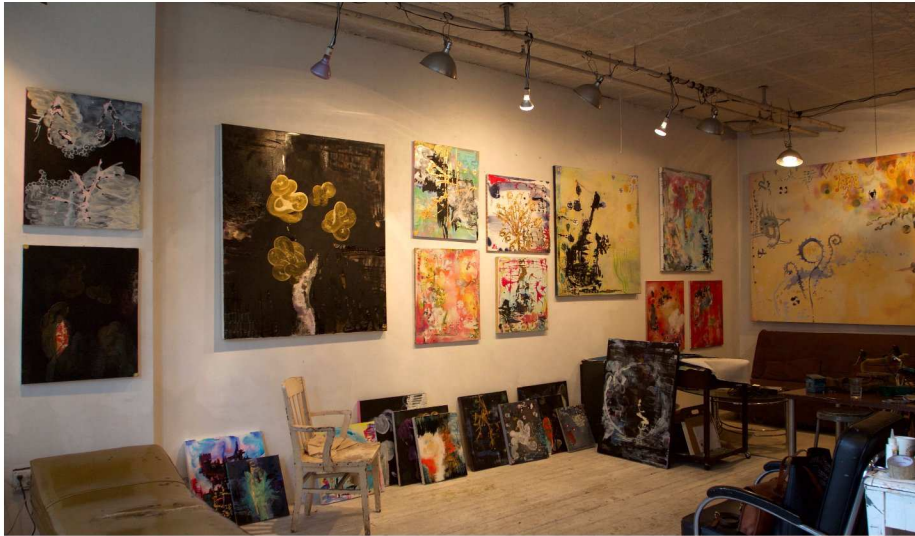
Spiral 1998
ink on paper 14x11"



Bio Origin 1998
ink on paper 14x11"



Garden 1998
ink on paper 14x11"



Peggy Cyphers is an American painter and printmaker who has shown her work in the U.S. and internationally since 1984.

Cyphers grew up in Baltimore and Chesapeake Beach, Maryland. Since her move to New York over 30 years ago, her inventive and combinatory approaches to the materials of paint, silkscreen and sand have developed into canvases that explore cultural evolution and the natural world.

Grants and honors for her painting include the Peter S. Reed Foundation, National Endowment for the Arts, Elizabeth Foundation for the Arts, Ford Foundation, Pratt Institute Faculty Fund Awards. Residency awards include Yaddo, Art Omi, Tong Xian Art Center Beijing, Santa Fe Art Institute, International Studio & Curatorial Program, Triangle Artists Workshop, and P.S.1./ Clocktower. Peggy Cyphers' critical writings have appeared in such publications as Art Journal, Arts Magazine, Art Critical, Painters on Paintings, Tema Celeste, A Gathering of the Tribes, and New Observations.

Cyphers is a Professor of Painting at Pratt Institute, Brooklyn, NY.

PEGGY CYPHERS

MODERN FOSSILS
2017

*CROSS CONTEMPORARY ART
SAUGERTIES, NEW YORK*

